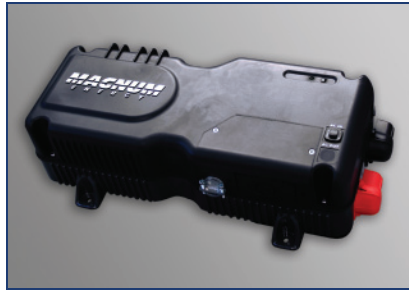




The MM Series Inverter/Charger



The MM Series Inverter/Charger is the cost effective solution for smaller power needs.

MODEL NUMBERS

- MM612
- MM1212

AVAILABLE FOR

- Marine Systems
- RV Systems

AVAILABLE ACCESSORIES

- Fuse Blocks
- Remote - ME-RC
- Remotes - MM-R & MM-RC



The Powerful Difference

Cost Effective Inverter/Chargers from Magnum Energy

The MM Series Inverter/Charger is a modified sine wave inverter providing a cost effective solution for those with smaller power needs in mobile applications. Versatile, easy-to-use, and lightweight, the MM Series provides a reliable base for your energy system.

Safe and reliable: The MM Series is ETL Listed to the stringent requirements of UL/cUL 458 and CSA C22.2 #107.1-01 for mobile use.

Attractive styling: The modern, hourglass case, paired with the die cast aluminum base combines form with function, creating an attractive unit that uses its base as a heat sink for superior high temperature operation.

Features:

Standard transfer relay:

The standard 20 amp transfer relay will pass AC power through the inverter when using grid or generator power.

Versatile mounting: Mount the MM Series on a shelf, wall, or even upside down.

Fan cooled: The MM Series is fan cooled, enabling the unit to work well in confined spaces. If the inverter does exceed its temperature limits, it will automatically shut down and then restart when it cools down.

Low battery protection:

If your battery voltage goes below the cut-out setting the MM Series will automatically shut down, saving your batteries.

High battery protection:

If your battery voltage reaches over the cut-out setting the MM Series will shut down.

Current overload protection:

The MM Series will automatically shut down if its output wattage is exceeded or it detects a short in the wiring, saving the unit from costly damage.

Convenient switches:

The MM Series comes with an on/off front-mounted switch with an easy-to-read LED indicator.

Circuit breaker protection:

Every model comes with built in input and output circuit breakers for ease of installation.

Battery temp sensor:

The standard battery temp sensor monitors temperatures from 0 - 50° C.

Buy with ease:

The MM Series is backed by a two-year (24-month) parts and labor warranty.



The MM Series Inverter/Charger

Specifications

| | MM612 | MM1212 |
|--|---|---------------------|
| Inverter Specifications | | |
| Input battery voltage range | 9 to 15.5 VDC | 9 to 15.5 VDC |
| Nominal AC output voltage | 120 VAC \pm 5% | 120 VAC \pm 5% |
| Output frequency and accuracy | 60 Hz \pm 0.1% | 60 Hz \pm 0.1% |
| 1 msec surge current (amps AC) | 27 | 42 |
| 100 msec surge current (amps AC) | 11 | 23 |
| 5 sec surge power (real watts) | 1100 | 2100 |
| 10 sec surge power (real watts) | 1050 | 1900 |
| 30 sec surge power (real watts) | 1000 | 1750 |
| 5 min surge power (real watts) | 950 | 1450 |
| 30 min surge power (real watts) | 675 | 1375 |
| Continuous power output at 25° C (with 1.0 PF) | 600 VA | 1200 VA |
| Continuous current output | 5 AAC | 10 AAC |
| Maximum continuous input current | 80 ADC | 160 ADC |
| Inverter efficiency | 95% | 95% |
| Transfer time | 16 msec | 16 msec |
| No Load (120 VAC output) | .77 ADC | 1.3 ADC |
| Waveform | Modified Sine Wave | Modified Sine Wave |
| Charger Specifications | | |
| Continuous output at 25° C | NA | 70 ADC |
| Charger efficiency | NA | 88% |
| Power factor | NA | > 0.95 |
| Input current at rated output (AC amps) | NA | 9 |
| General Features and Capabilities | | |
| Transfer relay capability | 7 AAC | 12 AAC |
| Battery temperature compensation | Yes, on models with chargers: standard temp sensor (battery temp 0 – 50° C) | |
| Remote available (optional) | Yes, MM-R or ME-RC | Yes, MM-RC or ME-RC |
| Internal cooling | 0 to 59 cfm variable speed | |
| Overcurrent protection | Yes, with two overlapping circuits | |
| Overtemperature protection | Yes on transformer and MOSFETS | |
| On/Off with status indicator | Yes, front mounted and easily accessible | |
| Low battery cutout | 10 VDC, adjustable on most models with the ME-RC remote | |
| AC output and input | Hardwire | Hardwire |
| Output circuit breaker | 7 A switchable | 15 A switchable |
| Input circuit breaker | 7 AAC | 16 AAC |
| Listings | ETL Listed to UL/cUL458, CSA C22.2 #107.1-01 | |
| Warranty | Two years | |
| Environmental Specifications | | |
| Operating temperature | -20° C to +60° C (-4° F to 140° F) | |
| Nonoperating temperature | -40° C to +70° C (-40° F to 158° F) | |
| Operating humidity | 0 to 95% RH non condensing | |
| Physical Specifications | | |
| Dimensions (l x w x h) | 16.6" x 8.4" x 4.7" (42 cm x 21 cm x 12 cm) | |
| Mounting | Shelf (top or bottom up) or bulkhead (vents up) | |
| Weight | 14 lb (6.4 kg) | 20 lb (9 kg) |
| Max operating altitude | 15,000' (4570 m) | |
| Construction | ABS plastic top and cast aluminum bottom | |

Magnum Energy, Inc.

2211 West Casino Road
Everett, Washington 98204 USA

The Powerful Difference

Phone: 425-353-8833
Fax: 425-353-8390
Web: www.magnumenergy.com

Testing for specifications at 25° C
Specifications subject to change without notice.

January 2010, Rev B

Part #64-0400

Authorized Magnum Dealer